



ACS CLIENT SOFTWARE USER MANUAL

1 ACS USER GUIDE

1.1 System Requirement

Recommended System Requirement

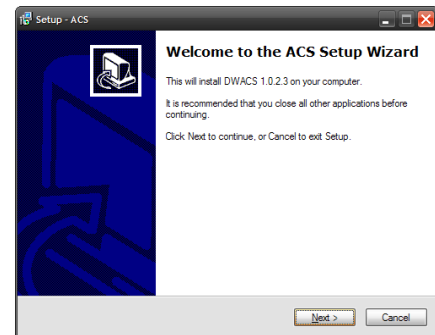
OS	WindowXP, Vista
CPU	Pentium 4, 2Ghz
VGA	1024*768, 64MB 24bit color graphic card
RAM	1GB
HDD	20MB Free space

Minimum System Requirement.

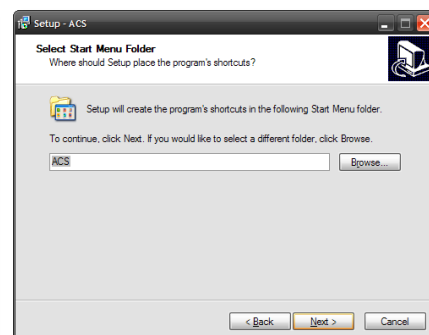
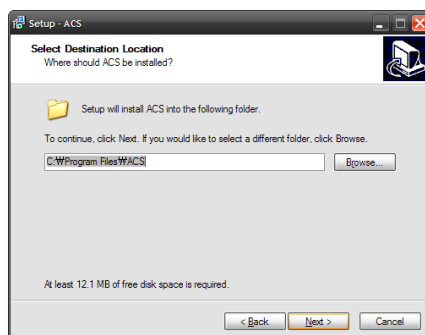
OS	WindowXP, Vista
CPU	Intel Core i5 cpu 2.80GHz
VGA	ATI Radeon HD 512
RAM	4GB
HDD	20MB Free space

1.2 Install

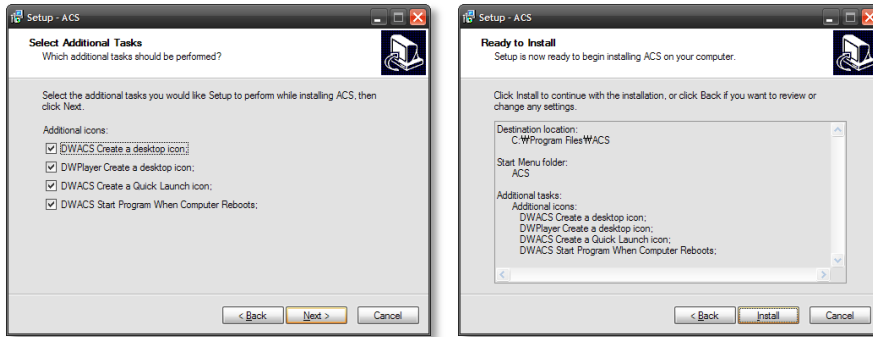
- a. Run Advanced Client SoftwareSetup.exe on the included CD. Follow the setup wizard to complete the installation.



- b. Press to install the program in a different directory. Press to continue.

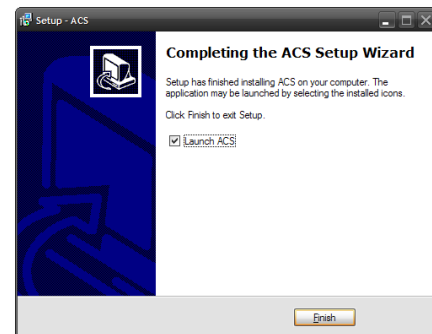


- c. Select what Icons and shortcuts you wish to install on your desktop. Press to move to the next screen



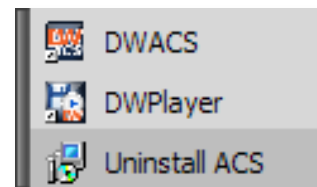
- d. Select to begin installation. When the installation is complete, the below message will appear.

Select whether you want to launch the software and select “finish”.

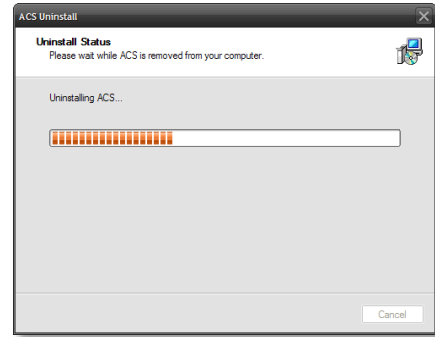
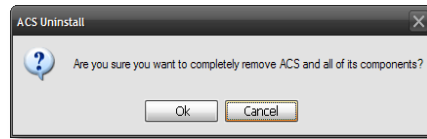


1.3 Uninstall

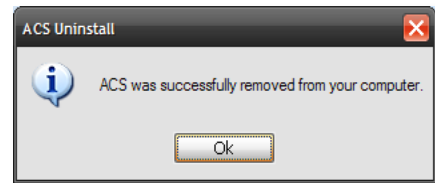
To uninstall ACS, press **UNINSTALL ACS** from the Start Menu of your PC.



A window will appear in Windows7 or Windows Vista. Press **YES** to begin the process.



When the process is complete, the below message will appear.



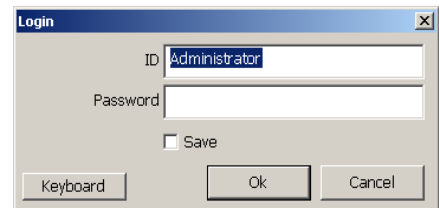
1.4 Basic Operation

Click on the **ACS** icon on the Desktop , or click **START** on Windows PC and go to the ACS Folder.

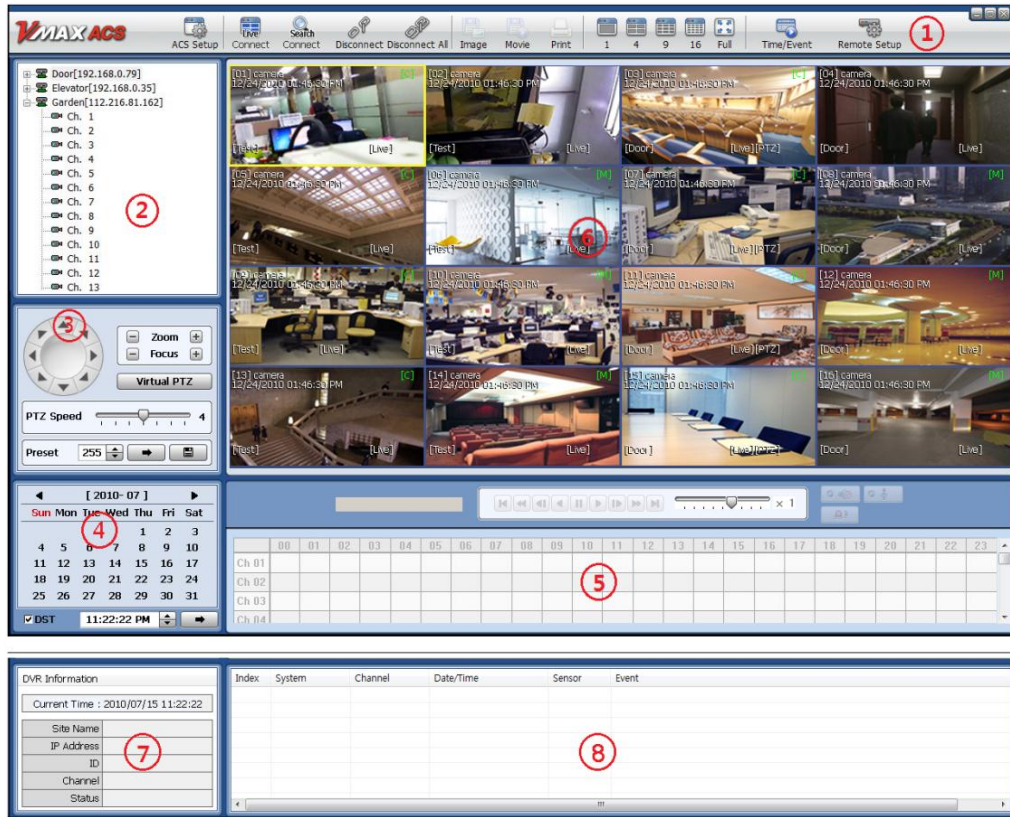


1.4.1 Log In

The default ID is Administrator, and there is no default password. The administrator account has the highest level of authority on the ACS.

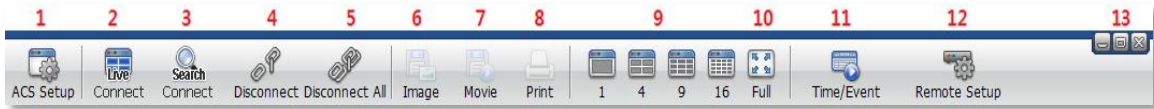


1.4.2 Screen Layout



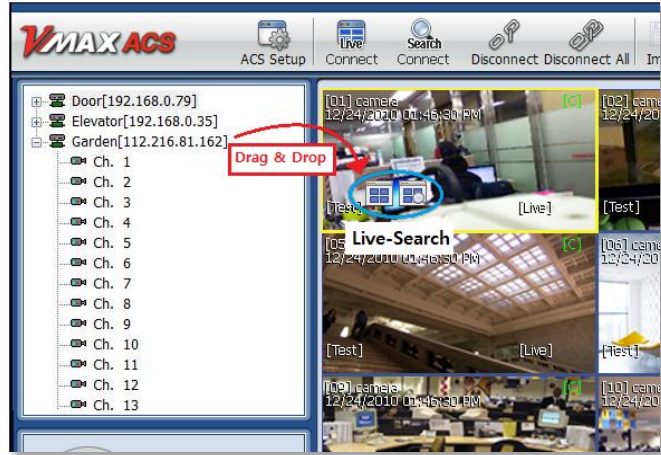
No.	Item	Description
1	Toolbar	ACS Setting, Live, Search, Disconnect, Image/ Video Export, Screen Mode, Remote Setup
2	Site List Panel	DVR Sites List
3	PTZ Panel	PTZ Camera Control (Live Mode Only)
4	Calendar Panel	Calendar Search
5	Search Panel	Displays recorded data for the selected date, controls playback speed, and audio
6	Display Panel	Displays live and playback image from single and multiple cameras as setup by the user
7	Information Panel	Shows the current time and site information of the selected channel
8	Event List Panel	Event list update

1.4.3 Tool Bar



No.	Icons	Description
1	ACS Setup	Option setup for Advanced Client Software
2	Live	Connect to a DVR in Live mode
3	Search	Connect to DVR in Playback mode
4	Disconnect	Disconnect from a selected channel
5	Disconnect All	Disconnect from all channels in the display area
6	Image	Export a selected image. Default file type is JPEG, saves to "My Documents" by default
7	Movie	Save a selected video in .asf format, saves to "My Documents" by default
8	Print	Print still image of single channel
9	Split	Single channel, 4-split channel, 9-split channel, 16-split channel
10	Full	Full screen mode
11	Time/Event	Switch between displaying the Search panel & Event list panel
12	Remote Setup	Configure settings of DVR remotely (administrator user only)
13	Window control	Minimize, Maximize & Exit Advanced Client Software

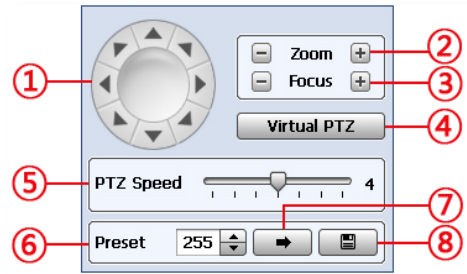
1.4.4 Site List Panel





The Site List displays all the DEVICES currently setup for remote connection with the ACS application. To select and view a desired camera or device, simply drag it from the site list panel onto the viewing area. Then, select the options Live or Search from the tool bar, or the little pop-up icons after dragging the device to the viewing area. If you want to connect to a specific camera from a device, you can do so by expanding the site's display in the site list panel, and dragged a specific channel onto the viewable area.

1.4.5 PTZ control Panel

PTZ camera control is only available in Live mode.




No.	Button	Description
1	Navigation Key	8 directional arrows to move the PTZ camera.
2	Zoom	Optical Zoom.
3	Focus	Manually adjust the focus of the PTZ camera.
4	Virtual PTZ	Control the PTZ camera's movement, Zoom and Focus with the mouse on the channel's screen directly.
5	PTZ Speed	Adjust the PTZ camera's response speed. Higher number= faster camera movement.
6	Preset	Set PTZ presets on current view.
7		Go to the preset location.
8		Save the preset location.

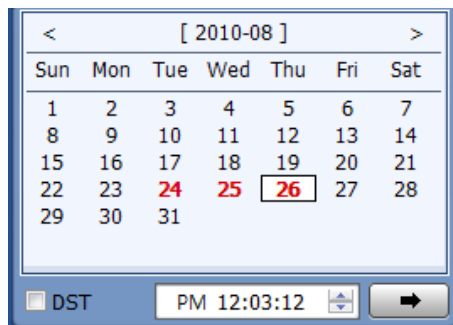
1.4.6 Calendar Search

The Calendar Panel is available in Search Mode only.

Dates highlighted in red indicate dates with recorded data available.

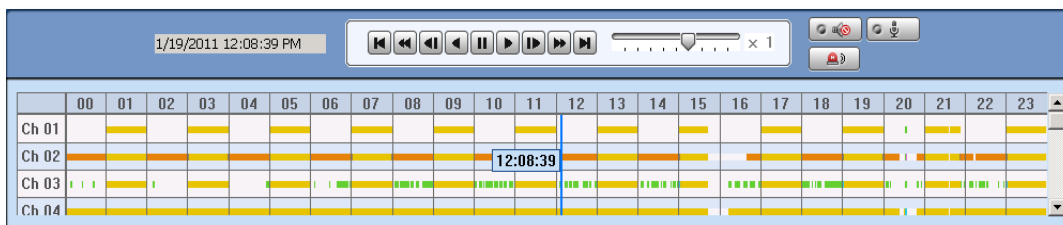
To start playback from a calendar search:

1. Select the day you would like to see.
2. You can also select specific hour, minute, & second to start playback.
3. If DST is selected, earlier one-hour overlapped video will be displayed first.
4. Press the  button to turn all channels in the display area to the selected time.





1.4.7 Search Panel

The Search Panel is only available in search mode.



The Search panel displays the record information for each channel from a date selected in the calendar panel.

Each color represents a different recording mode:

No Record	White
Continuous (Yellow Color)	
Panic (Red Color)	
Alarm (Orange Color)	
Motion (Green Color)	

To jump to a specific time in the playback using the Search Panel:

1. Click the time or move the time bar to the time you want to playback in the search panel.
2. To “zoom-in” to an hour in the Search Panel, double-click on the desired hour. The display time at the top of the Search Panel will display in minutes interval all 60 minutes of that selected hour. Time will be displayed in 5 minute spaces.

1.4.8 Playback control panel



No.	Button	Description
1		Go to First available data
2		Forward Playback : Decrease the speed Reverse Playback : Increase the speed
3		Step Backward
4		Reverse Playback
5		Pause
6		Forward Playback
7		Step Forward
8		Forward Playback : Increase the speed Reverse Playback : Decrease the speed
9		Go to Last available data

1.4.9 Additional Control Options

(Audio On/Off): Turn On or Off for Audio channel.

Two-way Audio: Two-Audio between ACS and DVR.

Relay: Turn On or Off for Relay.

NOTE When options are not properly setup on the DVR side, these buttons will be disabled.

1.4.10 Event List Panel

Index	System	Channel	Date/Time	Sensor	Event
5	192.168.0.35	1	2010/08/31 (23:26:05)		MOTION DETECTION
4	192.168.0.35	3	2010/08/31 (23:26:05)		VIDEO LOSS
3	192.168.0.35	1	2010/08/31 (23:26:00)		MOTION DETECTION
2	192.168.0.35	1	2010/08/31 (23:26:00)		VIDEO LOSS
1	192.168.0.35	1	2010/08/31 (23:25:57)		VIDEO LOSS

Event List Panel will display all events related to the DVR currently connected. See section 1.6.4 Event for more information on setting up events recording on the ACS.

To start playback video from any of the events in the event panel, double-click on the item .

1.4.11 Display Channel



When a camera is in Live mode, [Live] will be displayed in white text on the corner of the channel display. Channels in live will be indicated by a blue channel boundary.

In Search mode, [Search] will be displayed with all red text information. Channels in playback will be indicated by a red channel boundary.

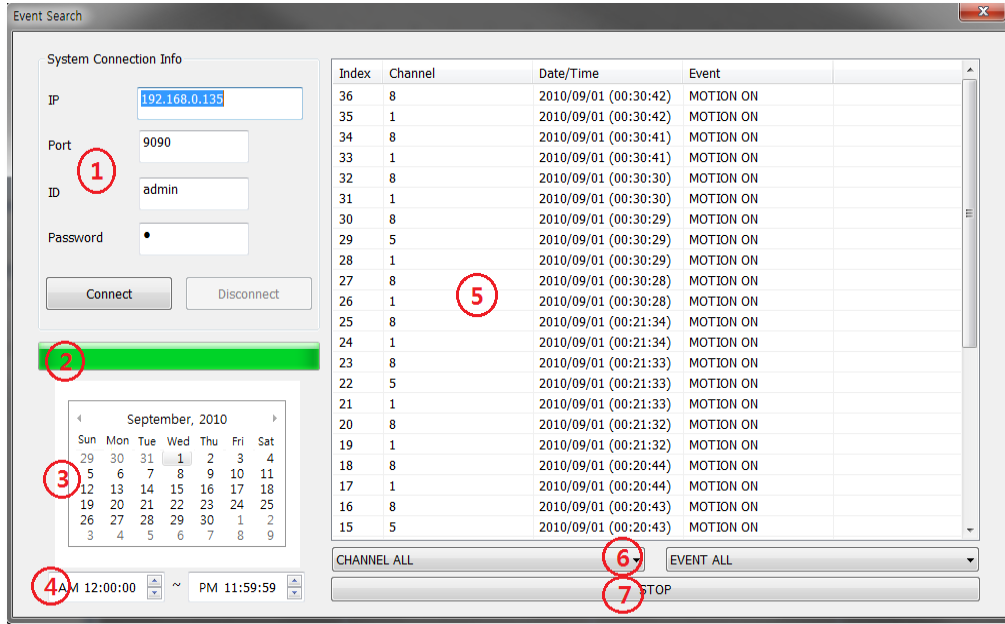
A channel selected will be indicated by a yellow frame around it.

1.5 Advanced Operation

1.5.1 Event Search

Right-click on a site in the site list to view the quick access menu.

Select **EVENT SEARCH** to run Event Search.

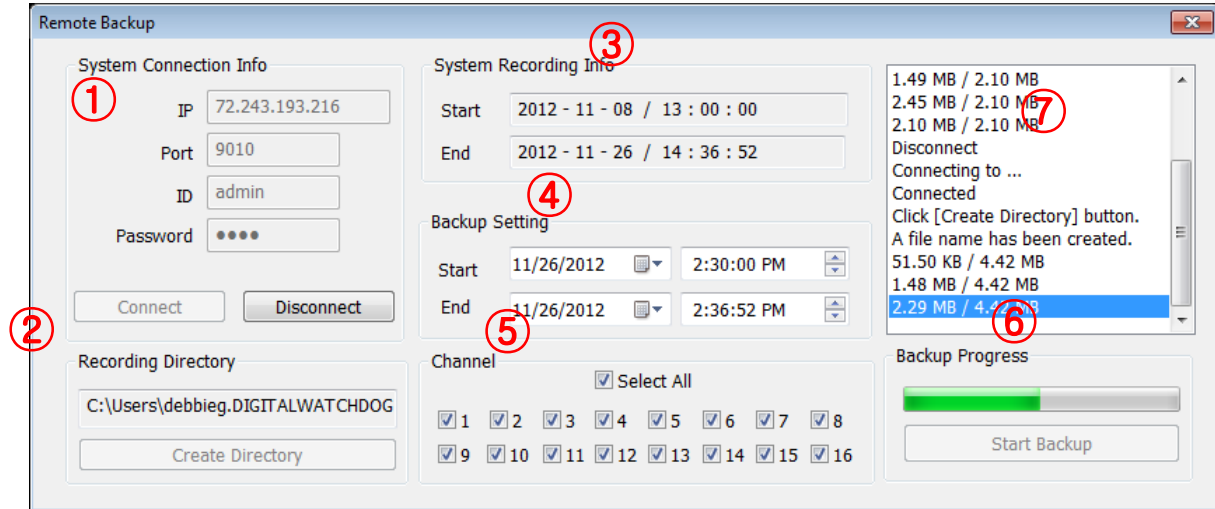


No.	Function	Description
1	System Connection Info	Input the information of Device and click 'connect'.
2	Event Download Status	Right after connecting to Device, event information will be downloaded automatically. The download progress bar will be shown.
3	Calendar Search	If there is an event in the selected date, the date is highlighted. Select a specific date to start event search.
4	Interval Setup	Set the time (start/ end time) for event search.
5	Event List	The desired date is chosen, the event list of the desired date will be shown on the list. Press 'Start'
6	Channel/Event Filter	Event information can be sorted by channel number, time, or event type. To view video corresponding to a specific event, double-click on that event.
7	Start/Stop Search	Start/Stop Search button.

1.5.2 Remote Backup

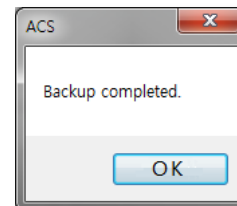
Right-click on a site in the site list to view the quick access menu.

Select **REMOTE BACKUP** to run Remote Backup.



No.	Function	Description
1	System Connection Info	Input the information of Device and press 'Connect'
2	Recording Directory	Enter the recording directory to backup. Enter a desired file name and select where the file will be saved.
3	System Recording Info	Displays the start and end time of the available recorded data in the system.
4	Backup Setting	Setup the start and end time of the data to backup.
5	Channel	Select which channels to backup.
6	Backup Progress	Backup Progress bar indicates the backup process status.
7	Backup Status Window	Displays the backup status in text message.

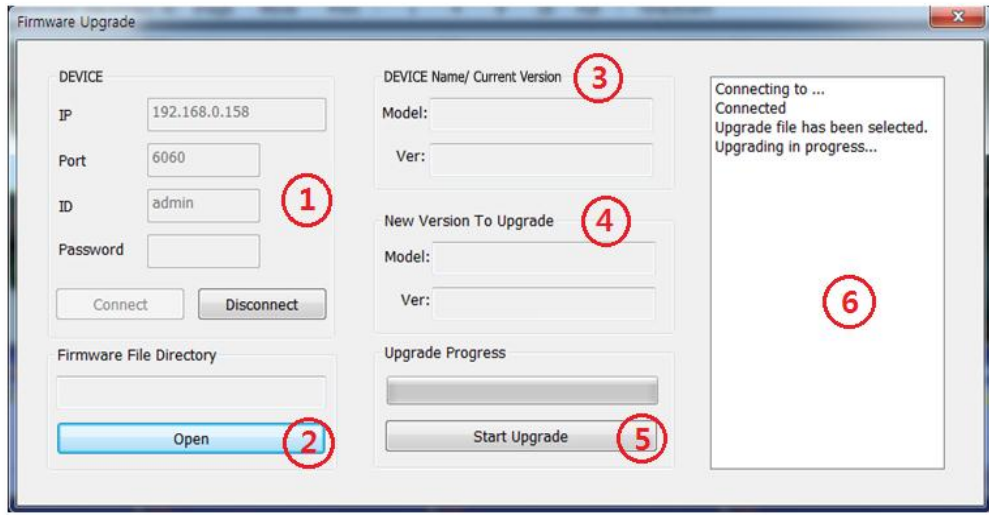
When the backup process is completed, "Backup Completed" message will appear.



1.5.3 Firmware Upgrade

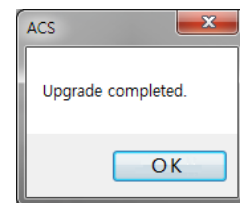
To view the quick access menu, right-click on a site from the site list.

Select **FIRMWARE UPGRADE** to run Firmware Upgrade. Firmware Upgrade allows you to update the DVR's firmware remotely.



No.	Function	Description
1	DEVICE Connection Info	Input the information of Device and click 'connect'.
2	Firmware File Directory	Select the firmware file directory to upgrade.
3	DEVICE Name/ Current Version	Displays the DVR's current Model and Firmware Version.
4	New Version to upgrade	Displays the new Device Model and Firmware Version.
5	Upgrade Progress	Start Upgrade and upgrade progress bar shows the upgrade progress status.
6	Upgrade Status Window	Displays the upgrade status in text message.

When the upgrade process is completed, "Upgrade Completed" message will appear.

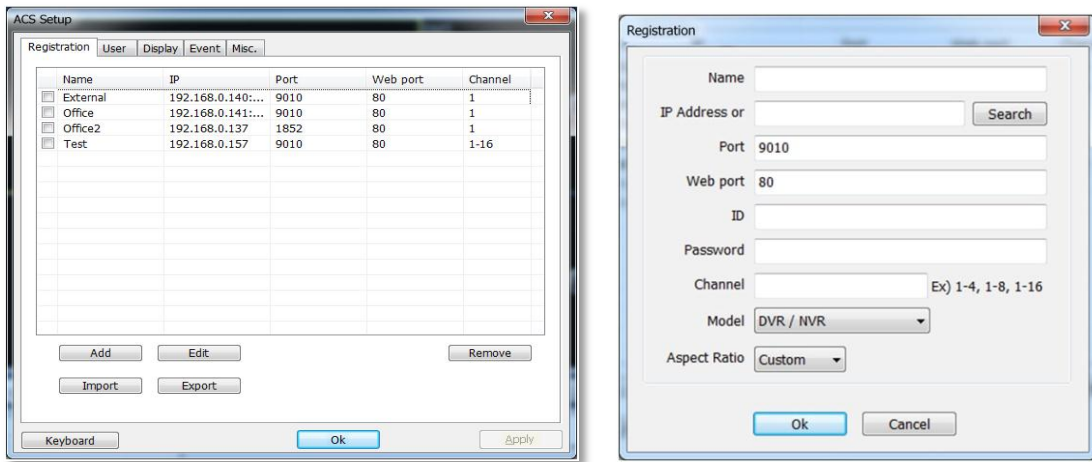


1.6 ACS Setup

The ACS Setup menu allows you to adjust the software's settings such as: Device Registration, Network, User, Display, Event and other options.

1.6.1 DVR Registration

Add, Modify, Import, Export or Remove DVRs from the site List.



1. To add a DVR, click 'Add' button, and input all required information

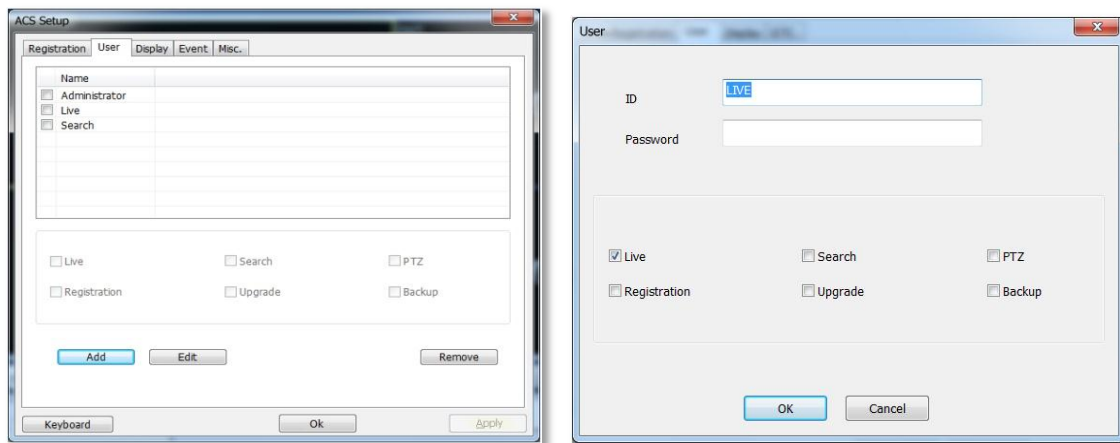
If a DVR is set to UPNP, it can be automatically detected by using the 'Search' button. The DVR must be on the **same network** as the ACS to be able to be detected. Once the new DVR is added, it will automatically appear on the site panel.

No.	Function	Description
1	Name	The name of the site.
2	IP	IP Address.
3	Search	Search the DEVICE sites in the same local network. (UPnP function)
4	Port	Port of the site. (Default: 9010)
5	Web port	Web Port of the site. (Default: 80)
6	ID	User ID of the site.
7	Password	Password of the site.
8	Channel	Number of channel of the site. For example: 16ch DEVICE: 1-16 or specifically: 1,3,5,7,9...
9	Model	Select a DEVICE or DEVICE's model name.
10	Aspect Ratio	Select the displayed Aspect Ratio. (Custom, 1:1, 4:3, 16:9)

2. To modify and/ or remove a DVR's information, check the box next to the device you want to change, and click EDIT or REMOVE to make any modifications to the DVR's information or delete it from the Device List.
3. Use the 'Import' and 'Export' buttons to export settings from one DVR and import them to multiple DVRs on the list. Please note that all DVRs must have the same firmware version to be able to accept exported settings.

1.6.2 User

User authority can be changed by the Administrator user only. "admin" is the built-in account for administrating the DVR and ACS program. (Default password for the admin user is no password).



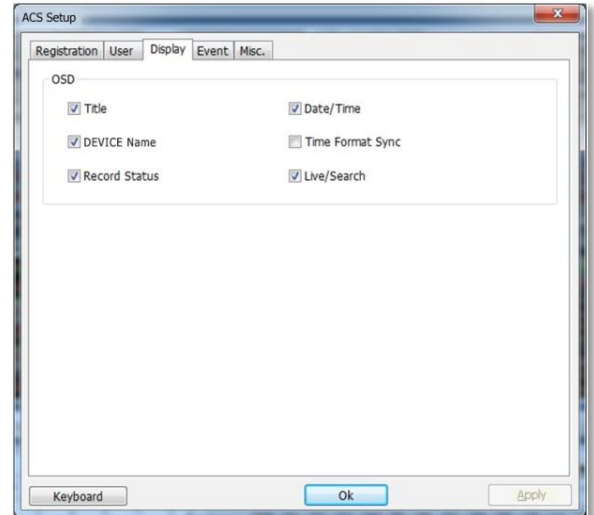
1. To edit a user's permissions, check the box next to the desired user and select 'EDIT'. The User setup page will appear. Here you can:
 - a. Change the user's ID and Password
 - b. Set which permissions current user will have. Check the box next to the permissions you want to allow current user:
 - i. Live Video
 - ii. Search Archived Video
 - iii. Registration- Add/ Edit/ Delete DVRs
 - iv. Remote firmware upgrade for DVRs
 - v. PTZ control
 - vi. Backup video files
 - c. Press OK to save changes, or cancel to exit edit mode.
2. To add a new user, press 'ADD' and follow a~c above.
3. To delete a user, check the box next to the desired user and select 'REMOVE'. (Administrator user cannot be modified or removed.)

1.6.3 Display

The Display setup menu allows you to modify the OSD as it appears on the ACS.

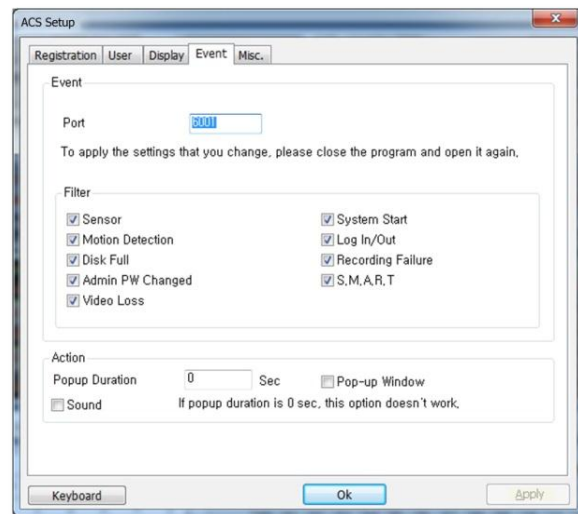
Using the check boxes, select which information will be displayed on the video displayed on the ACS software:

- **Title:** Show/ Hide the Camera's title and channel number.
- **Date/Time:** Show/ Hide the Date/Time
- **DEVICE Name:** Show/ Hide the DVR's name.
- **Time Format Sync:** Synchronize the DVR's time format to ACS.
- **Record Status:** Show/ Hide the Recording Mode for each channel.
- **Live/Search:** Show/ Hide the Live/Search indicator.



1.6.4 Event

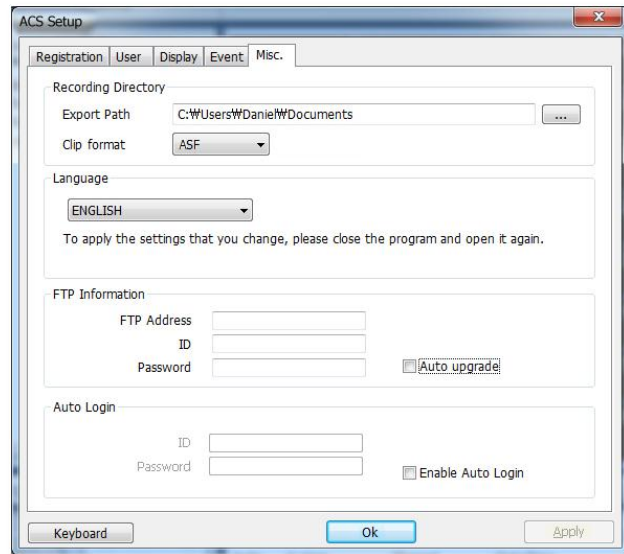
Setup the event port, event type, and popup settings for events recorded by the DVR.



No	Item	Description
1	Port	Input the same event port as the one set on the DVR's setting to receive event notification from the DVR. See section 4.4.3 Notifications for more information.
2	Filter	Select the type of event to receive.
3	Action	Setup the popup duration and enable beep sound on the ACS side.

1.6.5 Misc.

Setup the Recording Directory, Language, Auto Upgrade, and Auto Login options.



No.	Function	Description
1	Recording Directory	Select the recording directory to save images (saved as .jpg) and video clips (saved as .ASF or .MP4).
2	Language	Select a desired language from the drop-down options.
3	FTP Information	Enter the FTP's information. Once the FTP setup is done, the ACS will automatically detect the latest DVR firmware is available in the FTP and will start remotely upgrading the DVRs in its device list.
4	Auto Login	If 'Auto Login' is enabled, after inputting ID and Password, next time when you login, you don't need to type in the ID and Password again.